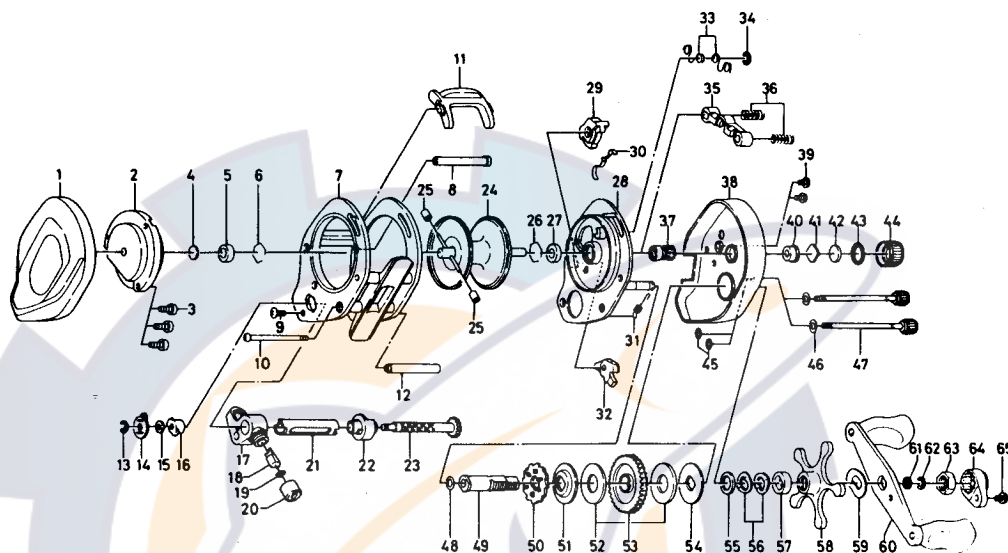


**BAITCASTING REEL PSA33**



Key No.	Parts No.	Parts Name	Key No.	Parts No.	Parts Name
1	B85-5203	Left side cover	34	320-1402	Clutch ret. ring
2	B86-0801	Set plate (left)	35	B35-9001	Pinion yoke
3	B83-4402	Left side cover screw	36	144-7101	Pinion yoke spring
4	375-7A05	Bearing metal washer	37	B85-4401	Pinion gear
5	B55-0301	Bearing	38	B90-3401	Right side cover
6	B42-1601	Bearing retainer	39	B36-0401	Right side cover screw (short)
7	B85-6002	Frame	40	B64-3101	Bush
8	B85-6201	Frame post A	41	B17-5401	Spool adjusting cap metal A
9	B36-0401	Frame post screw (short)	42	B17-5501	Spool adjusting cap metal B
10	B85-6901	Frame post screw (long)	43	171-5201	"O" ring
11	B85-1502	Clutch lever	44	B85-3403	Right spool cap
12	B85-6801	Frame post B	45	B85-3101	R/S cover screw washer A
13	320-6901	Worm shaft retainer	46	B85-3001	R/S cover screw washer B
14	B86-3301	Worm shaft plate	47	B91-1702	Right side cover screw (long)
15	373-1301	Worm shaft holder washer	48	373-7611	Gear shaft washer A
16	-022-2201	Worm shaft holder	49	B86-5001	Gear shaft
17	B57-8701	Line guide	50	B86-5101	Ratchet
18	B71-0101	Line guide pin	51	B85-4801	Gear shaft washer B
19	375-4100	Line guide washer	52	B36-0203	Drag washer A
20	342-4801	Line guide nut	53	B85-4901	Drive gear
21	B85-6301	Worm shield	54	B36-0301	Drag washer B
22	B85-6401	Shield bush	55	373-7800	Drag washer C
23	B85-6501	Worm shaft	56	150-8901	Spring washer
24	B86-1101	Spool	57	634-5801	Spacing sleeve
25	B35-2701	Brake collar	58	B57-8201	Star drag
26	B42-1601	Bearing retainer	59	150-9001	Handle washer
27	B55-0301	Bearing	60	B85-5101	Handle
28	B85-3505	Set plate (right)	61	B41-1701	Handle nut washer
29	B85-4601	Anti-reverse lever	62	320-8202	Handle nut retainer
30	B65-0501	Anti-reverse lever spring	63	B86-2101	Handle nut
31	B35-8901	Anti-reverse claw spring	64	B86-2302	Handle nut plate
32	B74-0501	Anti-reverse claw	65	351-1801	Handle nut plate screw
33	B81-5501	Set plate spring			